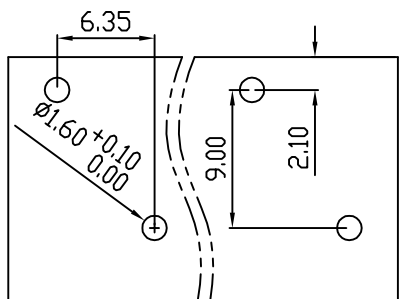


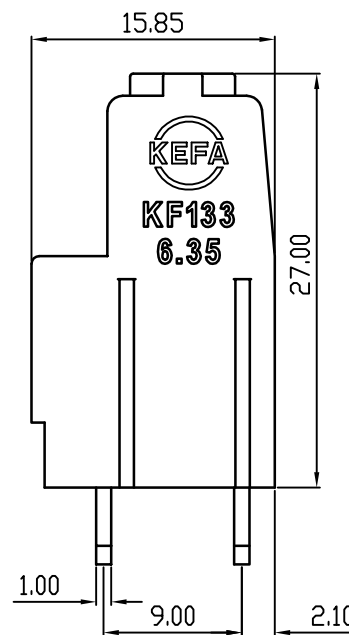
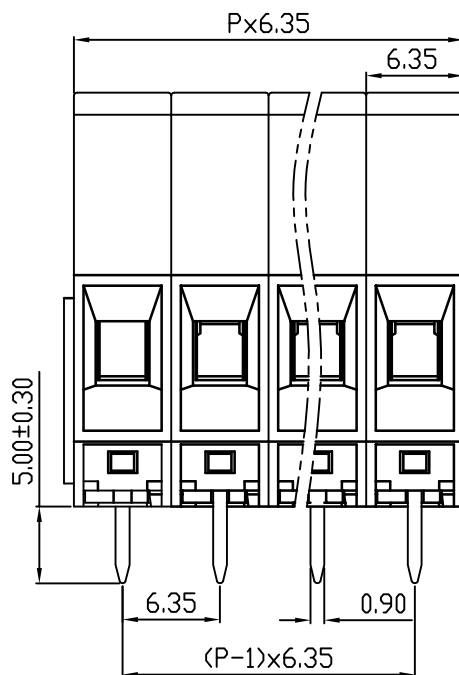
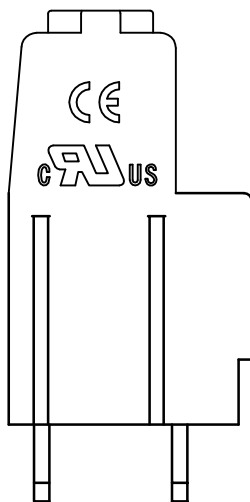
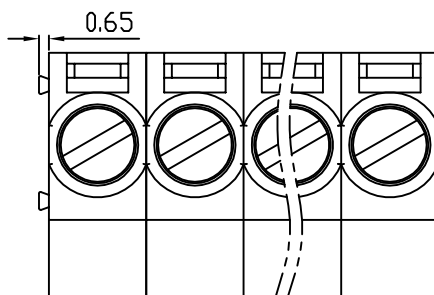
linear dimension(Tolerances Standard GB/T 14486-2008)



| variable range | to 6 | over 6 | over 10 | over 30 | over 60 | over 100 | over 160 | to 10 | over 10 | over 100 |
|----------------|-------|--------|---------|---------|---------|----------|----------|-------|---------|----------|
| | | to 10 | to 30 | to 60 | to 100 | to 160 | to 100 | | to 100 | |
| tolerance | ±0.20 | ±0.30 | ±0.50 | ±0.70 | ±1.00 | ±1.30 | ±1.60 | 0.10 | 0.30 | 0.60 |



PCB LAYOUT



REVISION RECORD

| REV. | DESCRIPTION | ECN No. | APPROVED | DATE |
|------|-------------|---------|----------|----------|
| A | 新发行 | | CLF | 21.03.15 |
| | | | | |
| | | | | |

| UL/CUL 技术参数 | | | | |
|-----------------------|---|------------------|-----|------|
| UL/CUL Technical Data | | | | |
| 等级 | Use Group | B | C | D |
| 额定电压 | Rated Voltage [V] | 300 | - | 300 |
| 额定电流 | Rated Current [A] | 30 | - | 10 |
| 接线范围 | Wire Range | 24-10 | | |
| 单/多芯线 | Solid/Stranded [AWG] | | | |
| 耐电压 | Withstanding Voltage | 1600V/1Min | | |
| IEC 技术参数 | | | | |
| IEC Technical Data | | | | |
| 过电压类别 | Overvoltage Category | III | III | II |
| 污染等级 | Contamination Class | 3 | 2 | 2 |
| 额定电压 | Rated Voltage [V] | 500 | 630 | 1000 |
| 额定电流 | Rated Current [A] | 41 | 41 | 41 |
| 额定冲击电压 | Impulse withstand voltage ^a [KV] | 6.0 | 6.0 | 6.0 |
| 导线截面积 | Conductor cross section | 6.0 | | |
| 硬质/柔性导线 | Solid/flexible [mm ²] | | | |
| 材料 | | | | |
| 绝缘材料 | Insulation Material | PA66 | | |
| 阻燃等级 | Imflammability | UL94V-0 | | |
| 导体材料 | Contacting Material | 铜合金 Copper alloy | | |
| 导体表面镀层 | Contactive Coating | 镀锡 Tin Plated | | |
| 一般参数 | | | | |
| 间距 | Pitch [mm] | 6.35 | | |
| 极数 | Poles [P] | 1-24 | | |
| 剥线长度 | Stripping Length [mm] | 8-9 | | |
| 螺丝 | Screw/扭矩 Torque(Max) [N.m] | M3/0.5 | | |
| 工作温度 | Operating temperatur [°C] | -40--+105 | | |
| 引针尺寸 | Pin Dimensions [mm] | 5.0 | | |
| PCB板孔径 | PCB Hole Diameter [mm] | 1.6 | | |

| | | | |
|------|-----|------|----------|
| DES. | LQQ | DATE | 21.03.15 |
| CHK. | SY | DATE | 21.03.15 |
| APP. | CLF | DATE | 21.03.15 |

单位/UNITS mm 尺寸/SIZE A4 比例/SCALE 1:1



慈溪市科发电子有限公司
CIXI KEFA ELECTRONIC CO., LTD

| | | |
|-----------------------------|-------------|---|
| 第三视角/THIRD ANGLE PROJECTION | 版本/REV | A |
| 名称/TITLE | KF133A-6.35 | |